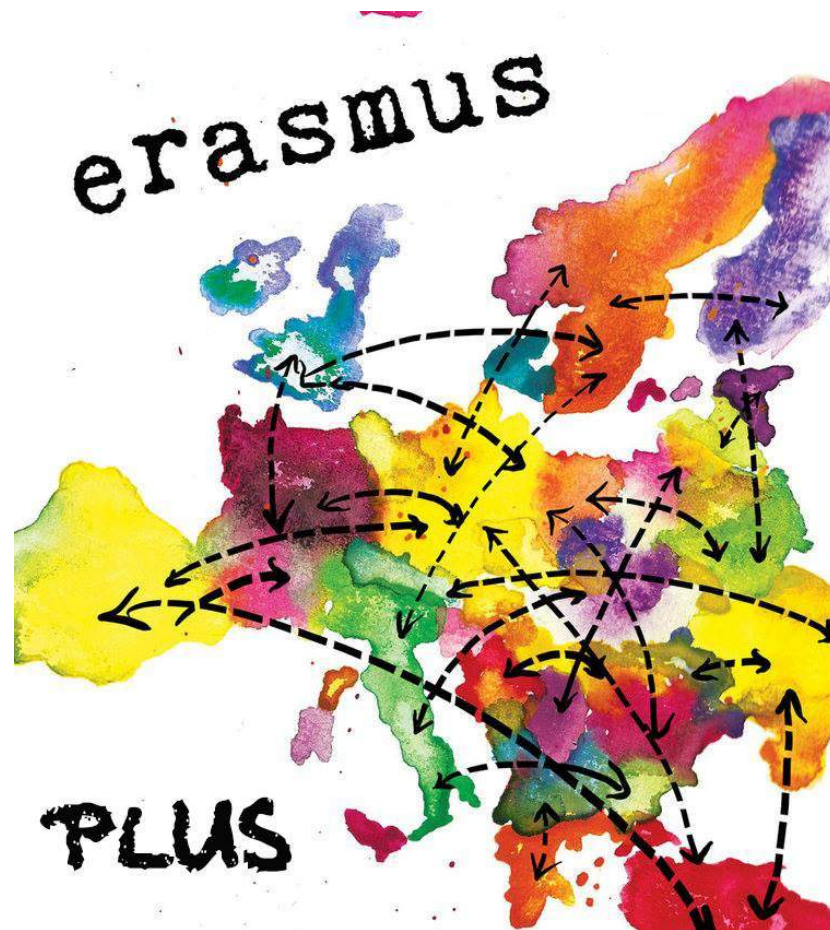


# Guide to...



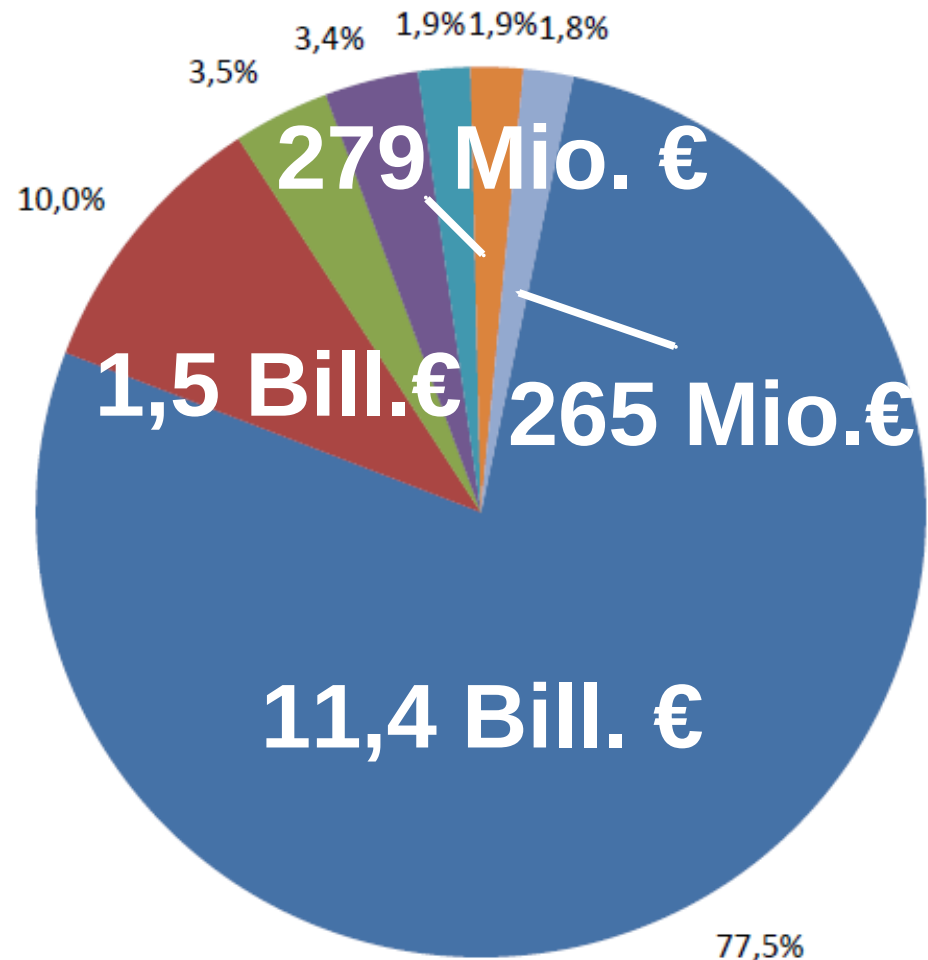


- Replaces the Programme for Lifelong Learning (PLL)
- Integrates the programs „Youth“ and „Sport“
- Various changes to the previous Programme-Period (Structure, Financing & Goals)

# Budget allocation 2014 - 2020

**Total: 14,7 Billions Euro**

- Education and training (77.5%)
- Youth (10%)
- Student loan facility (3.5%)
- National agencies (3.4%)
- Administrative costs (1.9%)
- Jean Monnet (1.9%)
- Sport (1.8%)

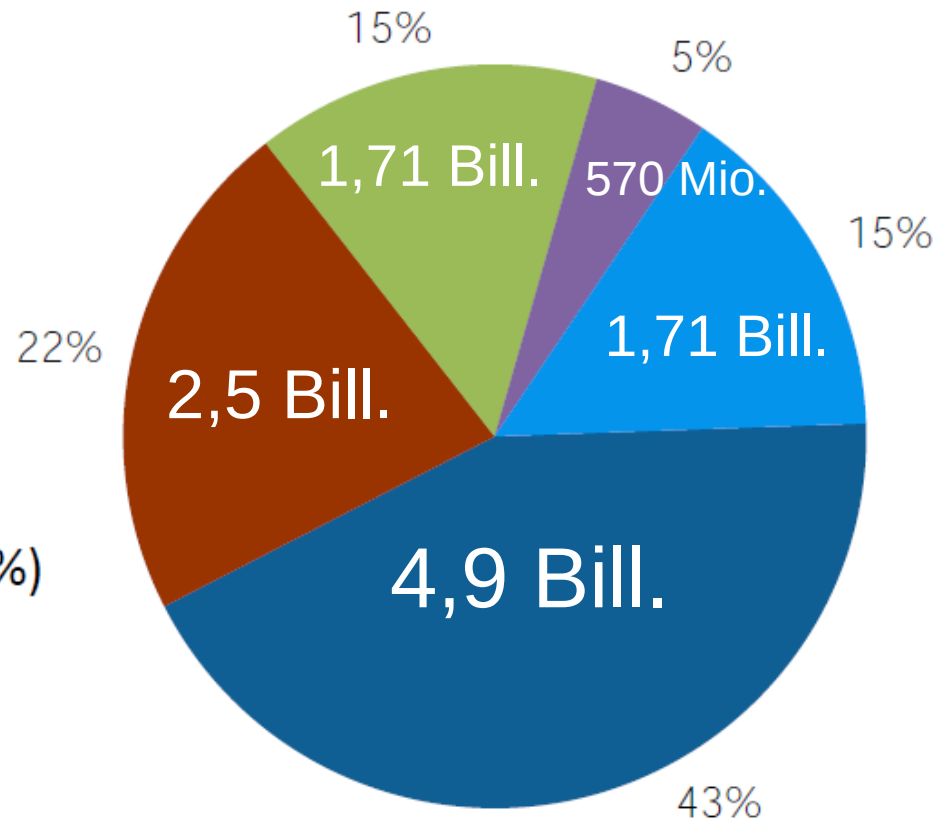


Compare: PLL+Youth 2007-2013 had a budget of 7,85 Bill.€.

# Breakdown of Education and Training budget by sectors

## Minimum allocation by sector

- Higher Education (43%)
- VET (22%)
- Schools (15%)
- Adult Education (5%)
- Remaining Funds for Allocation (15%)

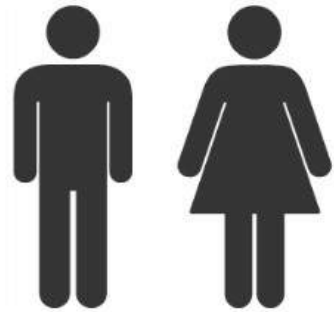


# Where does Erasmus+ come from?



➔ Country-Specific Recommendations

# Who can take part in Erasmus+?



Organisations



Countries

# Who can apply?

- **Organisations** with legal status
  - Associations, cooperations, cooperatives etc.
  - No individuals!
- **Pre-Application** and registration on URF and ECAS Databases
- **Informal Groups of Young People** in the Youth Programme



# Programme Countries



+ Partner Countries / Neighbour Countries



Jean Monnet

Tempus

Youth in Action

Erasmus Mundus

# Lifelong Learning Programme

Comenius

Leonardo

Erasmus

Grundtvig

Transversal

# Erasmus+

**Jean Monnet Activities**

**Key Action 1:**  
Learning  
Mobility of  
Individuals

**Key Action 2:**  
Co-operation for  
Innovation and  
Exchange of  
Good Practices

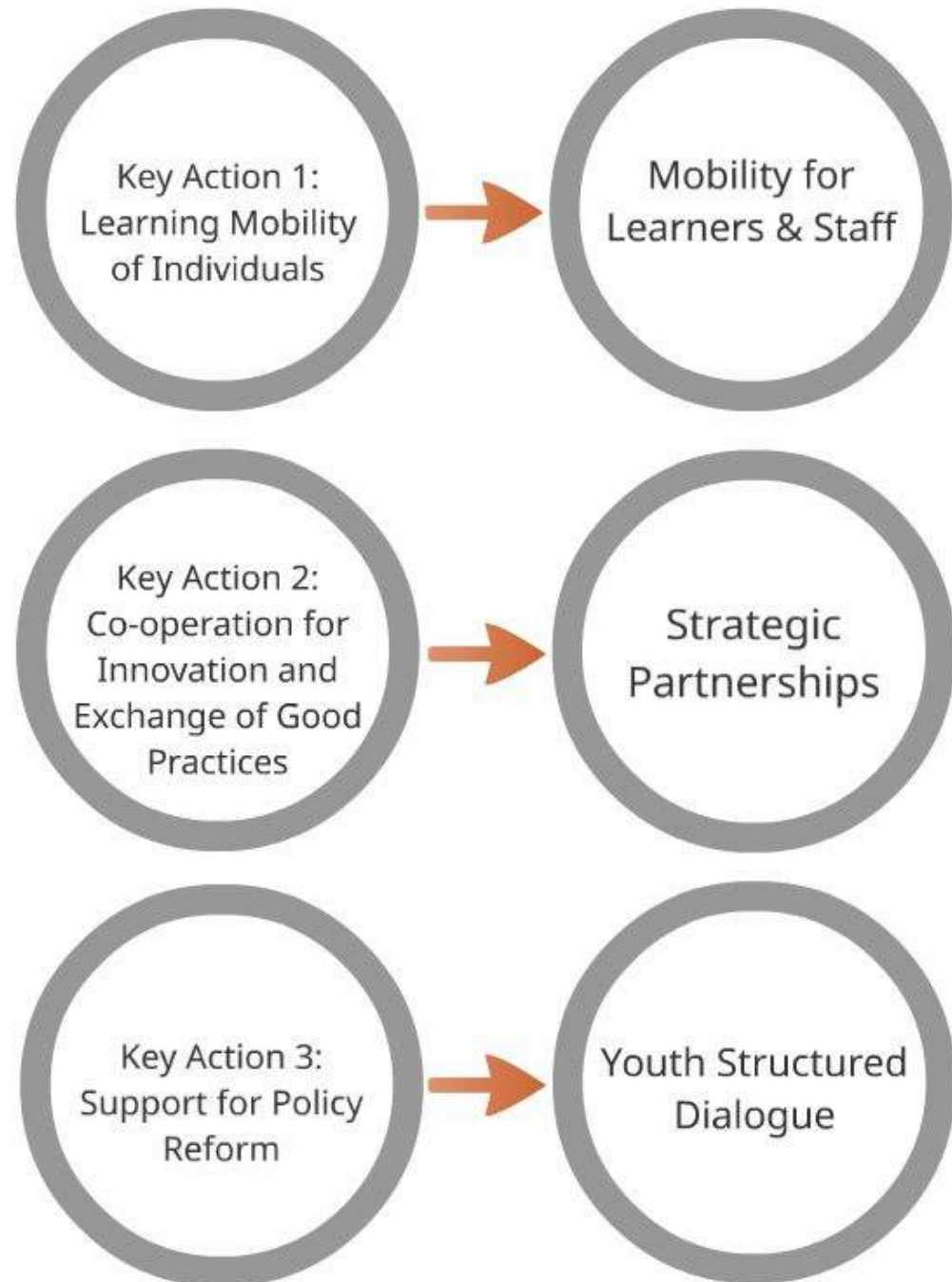
**Key Action 3:**  
Support for  
Policy Reform

**Sport**

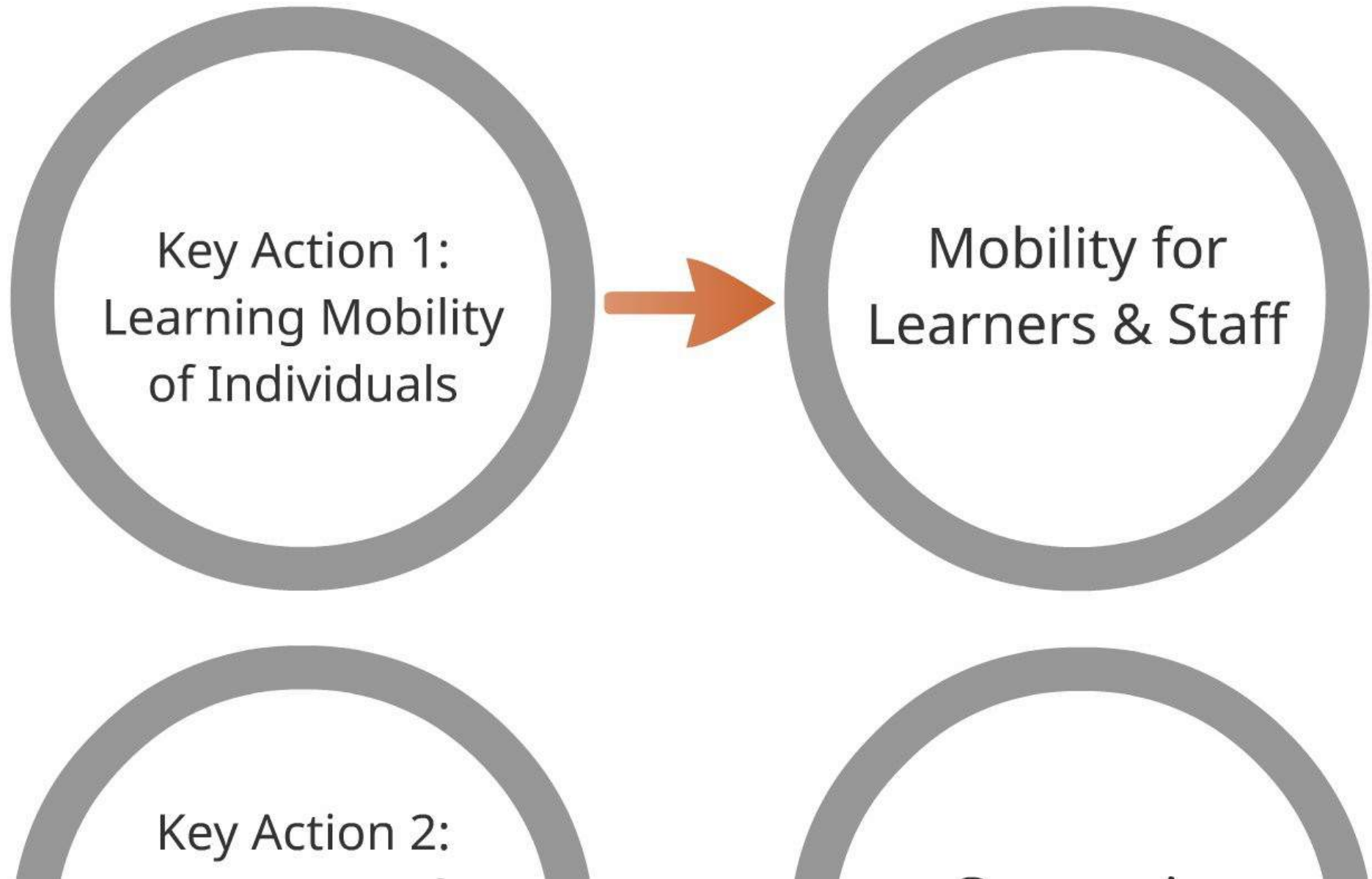
*The new programme is for organisations across all sectors actively involved in delivering formal and non-formal education and training, youth and sport activities.*

# EASY (new) STRUCTURE:

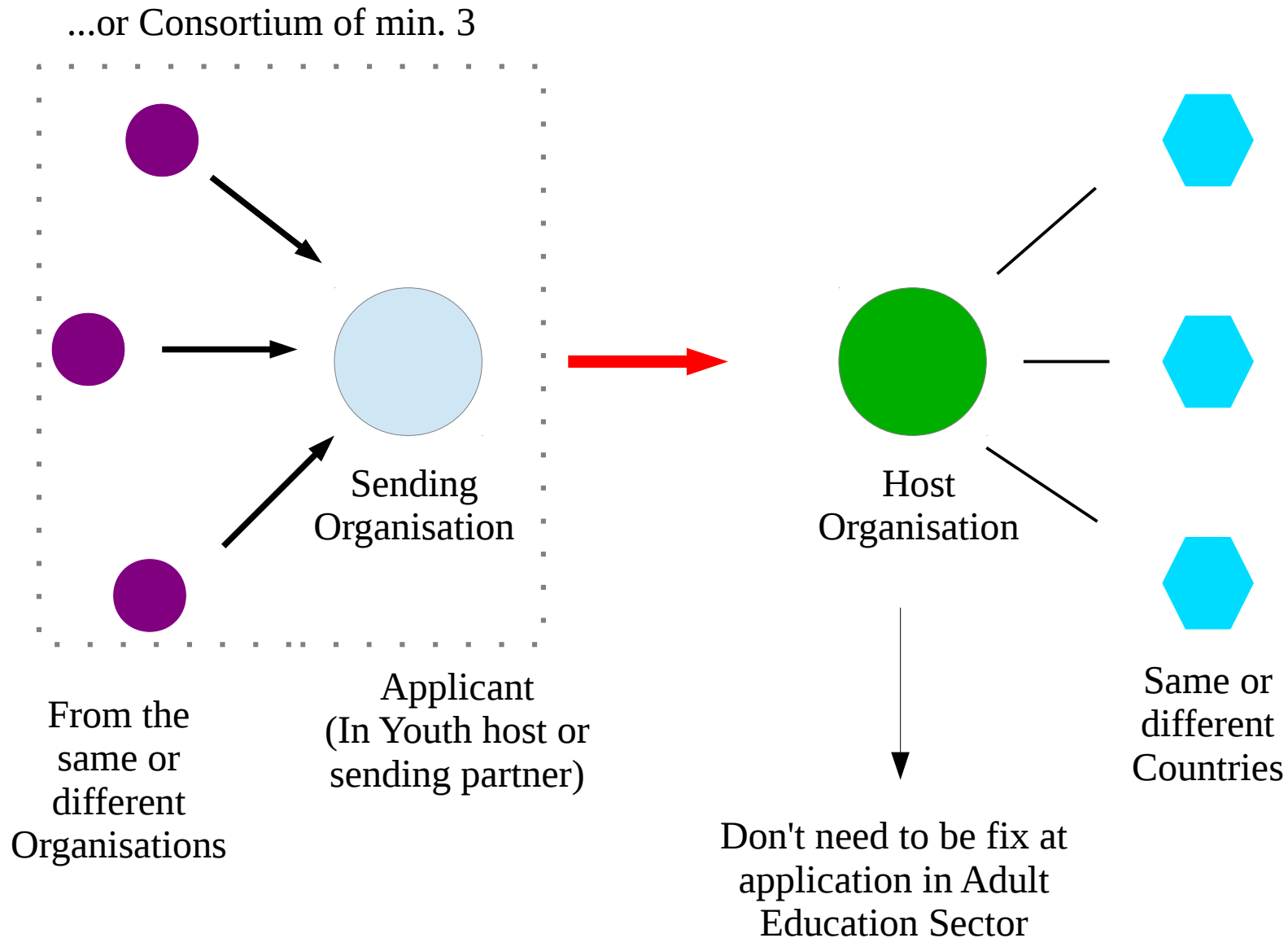
## 3 Key Actions in different sectors...



# MOBILITY



# Key Action 1: Mobility for Staff and Learners



## In the fields of...

- ① Higher Education
- ② Vocational Education & Training
- ③ Schools
- ④ Adult education
- ⑤ Youth

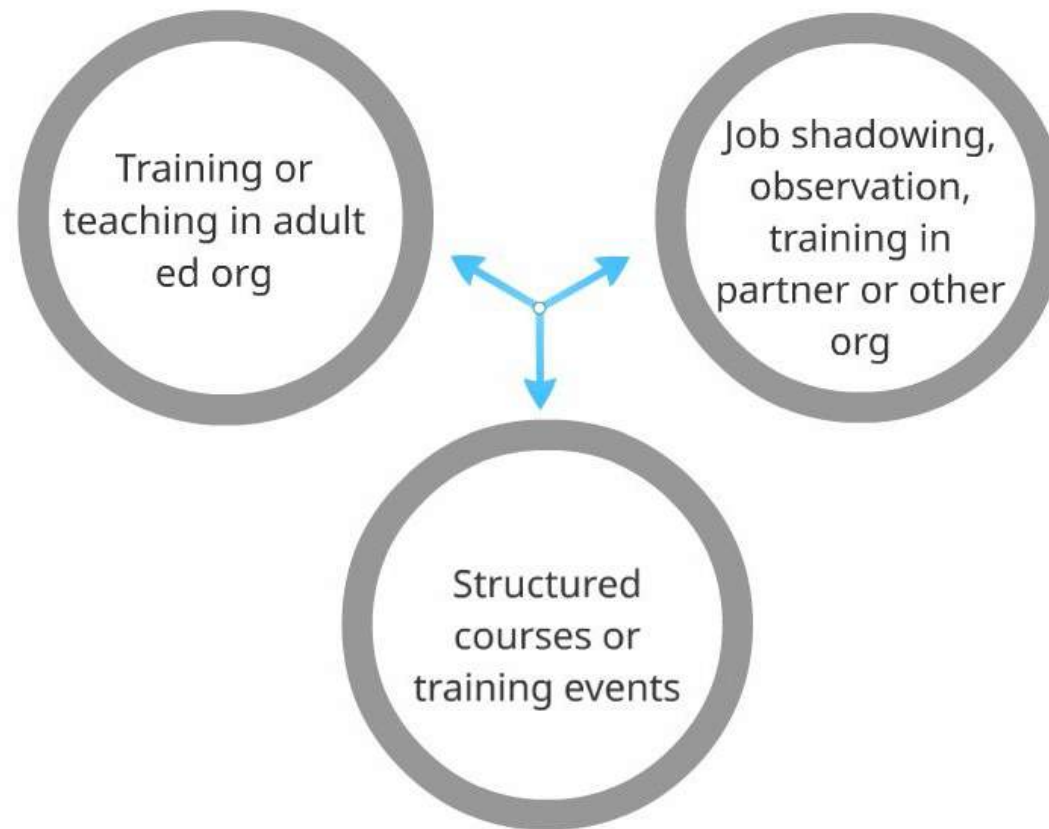
# High E., VET and YOUTH: Mobility for Learners and Staff

Funding for a variety of activities:

- study
- work experience
- job shadowing
- training
- teaching

Activities are dependent on your field

# Adult & School Education Mobility for Staff



Staff Mobility



# Funding

- Organisations apply
- Unit cost funding
- Additional costs for supporting beneficiaries with additional needs
- Learners and staff do not need to be named in the application

# Learners: Target outcome to improve/increase...

- learning performance;
- employability and improved career prospects;
- sense of initiative and entrepreneurship;
- **self-empowerment** and **self-esteem**;
- foreign language competences;
- **intercultural awareness**;
- more **active participation in society**;
- better awareness of the European project and the **EU values**;
- motivation for taking part in future (formal/non-formal) education or training after the mobility

# Staff: Target outcome to improve/increase...

- **competences**, linked to their professional profiles
- **broader understanding** of practices, policies and systems
- capacity to **trigger modernisation and international opening** within their educational organisations;
- **understanding of interconnections** between formal and non-formal education, vocational training and the labour market respectively;
- **better quality** of their work and activities
- understanding and responsiveness to **social, linguistic and cultural diversity**;
- ability to address the **needs of the disadvantaged**;
- support for and **promotion of mobility** activities for learners;
- opportunities for **professional and career development**;
- foreign language competences;
- **motivation and satisfaction** in their daily work.

## Key Action 1: Financing

Eligible Costs	Calculation (German NA terms)	Mechanism	Caution
Travel	100-499km = 180€ ( <i>Youth Exch.:80€</i> )	Unit costs	Based on the travel distance per participant.
	500-1999km=275€ ( <i>Youth Exch.:170€</i> )		
	2000-2999km=360€ ( <i>Youth Exch.:270€</i> )		
	3000-3999km=530€ ( <i>Youth Exch.:400€</i> )		
	4000-7999km=820€ ( <i>Youth Exch.:620€</i> )		
Organistional Support <i>Field 2-4</i>	-100 participant: 350€/person	Unit costs	Based on the number of participants
	100- participant: 200€/person		
Organistional Support <i>Field 5 – Youth</i>	<i>Exchange: 33€/day per participant</i>	Unit costs	Based on the number of participants
	<i>Stuff mobility: 58€/day per participant</i>		
Special needs	Additional costs directly related to participants with Disabilities. 100% of eligible costs.	Eligible costs	Must be motivated in the application form
<b>Adult Learners/VET</b>			
Individual support	1-14 days: 23-36€/day per participant	unit costs	subsistence of participants during the activity depending on destination
	15-60 days: 16-25€/day per participant		
	61-360 days: 12-18€/day per participant		
Linguistic support	Activities 1-12 months: 150 EUR per participant (except EN,FR,SP,DE,IT)	Unit costs	For needs for languages not offered by the central online service.
Exceptional costs	Costs to support the participation of learners with fewer opportunities. 100% of eligible costs.	Eligible costs	Must be motivated in the application form.
<b>Organisations Staff</b>			
Individual support	1-14 days: 70-112€/day per participant	unit costs	Subsistence of participants during the activity depending on destination
	15-60 days: 49-78€/day per participant		
Course fees	1-10 days: 70€/participant per day	unit costs	Must be motivated i. Appl.

# KA 1: Application procedure

- At least 2 Partners from 2 programme-countries
- Only one application per Applicant/Consortium at the Coordinators N.A. possible
- Using uniform eforms.
- First deadline: 24. March 2014 (12h) for Youth, VET & Adult Education
  - Project start: 1.7.2014 - 31.12.2014
- Later deadlines (Youth only): 30. April and 1st October 2014 (12h) for Project starts: earliest 1.9.2014 or 1.2.2015
- Minimum Score of 60 out of 100 Points
- Minimum 50% of Points in each Application-Section

# STRATEGIC PARTNERSHIPS





# Strategic Partnerships

Development, transfer and/or implementation of innovative practices

Aims for positive impact on:

- participating organisations
- policy systems
- individuals


Cultural shift in administrative practice



# Again in the fields of...

- ① Higher Education
- ② Vocational Education & Training
- ③ Schools
- ④ Adult education
- ⑤ Youth

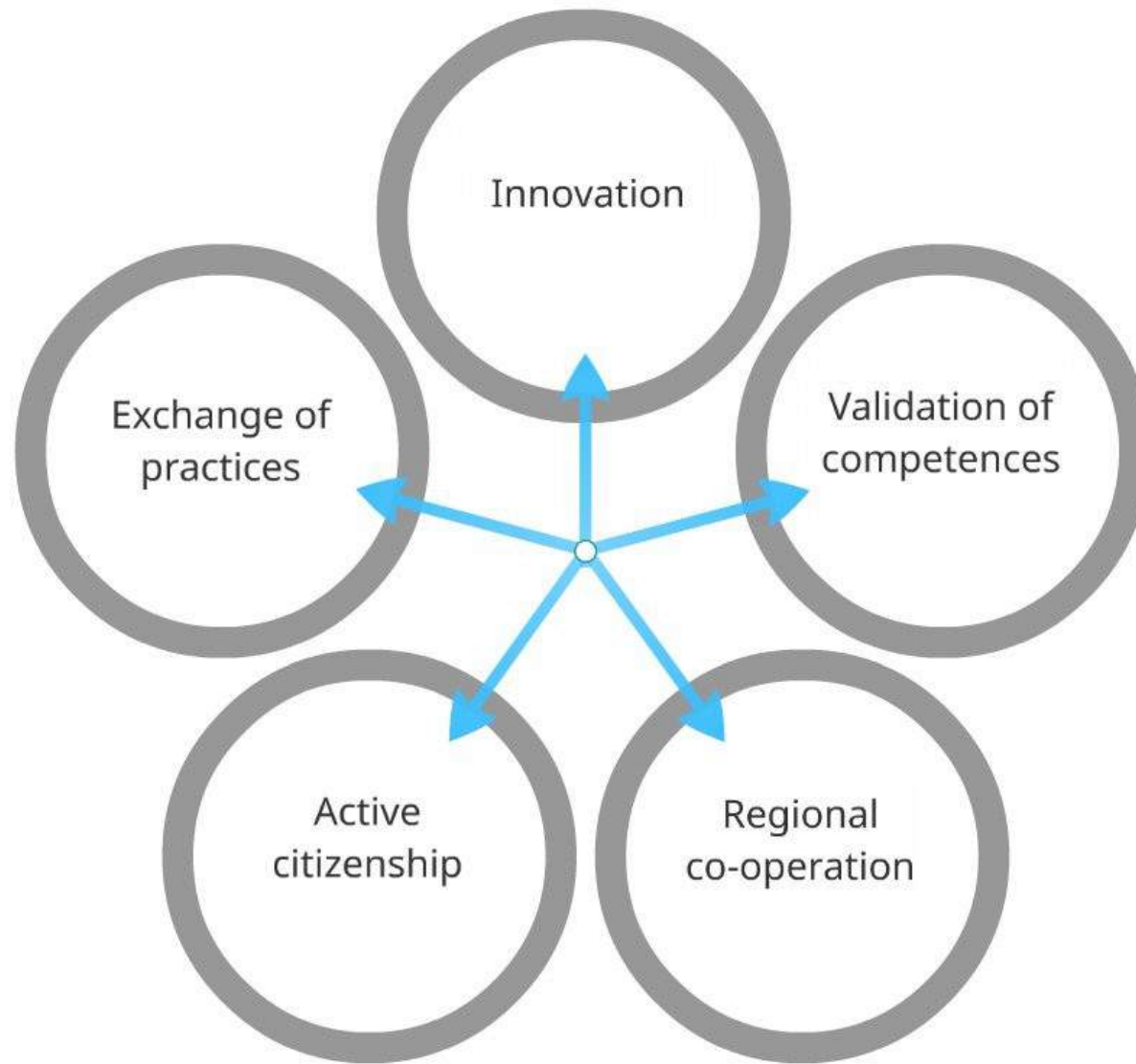
# Who can participate?



Any organisation  
active in  
education,  
training, youth or  
relevant sector or  
field

## Strategic Partnerships for VET and Adult Education

- Any organisation active in VET or adult education can apply for a project in the relevant field
- Cross-field projects are encouraged!
- Show relevance of project to your organisation's activities



## Flexible!

Can include training, teaching and learning activities of individuals where added value is proven

# Anticipated outcomes are improving...

- **attractive education and training** programmes
- processes of **recognition and validation of competences**
- **effectiveness of activities** for the benefit of **local communities**
- **practices** to cater for the **needs of disadvantaged groups** and to deal with social, linguistic and cultural **diversity**
- **modern, dynamic, committed and professional environment** inside the organisation

# Anticipated outcomes are improving...

- open to **synergies** with organisations active in different fields
- strategic planning of **professional development** for staff
- **capacity and professionalism** to work at EU/international level
- reinforced **cooperation** with partners from other countries
- allocation of **financial resources**
- **quality** in the preparation, implementation, monitoring and follow-up of **EU/international projects**

# Funding (News)

- **One organisation applies** on the behalf of a project partnership (consortium)
- **Unit cost funding**
- **Different sizes** of projects
- No expenses-proofs needed
- **Additional funding** to support beneficiaries with additional needs
- 2-3 years **duration** / Youth: 6 month - 2 years
- Top limit: **150.000€/year** each Projekt.
- Finance **proof of Applicant** from  $\geq 60.000\text{€}$  per project



## Key Action 2: Financing

(max. total grant per partnership: 150.000€/year)

Eligible Costs	Calculation (German NA terms)	Mechanism	Caution
<b>Project management and implementation</b>	Coordinator: 500€ per month Participating Org.: 250€ per month	Unit costs	Based on the project-duration; max. 2750€ per month.
<b>Transnational Project Meetings</b>	100 – 1999 km = 575€ From 2000 km= 760€	Unit costs	Based on the travel distance per participant. Max. 23.000€/year
Intellectual Outputs	Staff costs Manager: 280€/day Staff costs Teacher/Trainer etc.: 214€/day Staff costs Technician: 162€/day Staff costs Administrative: 131€/day	Unit costs	Tangible deliverables of the project (such as curricula, pedagogical and youthwork materials, open educational resources (OER), IT tools ... caution: management/ administration are covered in other units.
Exceptional costs	Costs for subcontracting or purchase of goods and service: 75% of eligible costs, Max. 50.000€/project	Portion of eligible costs	Services that cannot be provided directly by the participating organisations for duly justified reasons. Equipment cannot concern normal office equipment or equipment normally used by the participating Organisations.
Multiplier events: conferences, seminars, events	National and transnational events aimed at sharing and disseminating the intellectual outputs: 100€ per participant from the event country, 200€ per participant from a foreign country. (max. 30.000€ per project)	Unit costs	Support only for the intellectual outputs of the project and only in countries that are not partner-countries.
Special needs	Additional costs directly related to participants with Disabilities. 100% of eligible costs.	Eligible costs	Must be motivated in the application form
<b>Transnational training, teaching and learning activities carried out within the strategic partnership</b>			
Travel	100 – 1999 km = 275€ From 2000 km= 360€	Unit costs	Based on the travel distance per participant.
Individual support: <i>Staff teaching and training</i>	1-14 days: 75-120€/day per participant 15-60 days: 53-84€/day per participant 61-360 days: 38-60€/day per participant	unit costs	Subsistence of participants during the activity depending on destination
Individual support: <i>Short term joint staff training events</i>	1-14 days: 100€/day per participant 15-60 days: 70€/day per participant	Unit costs	Subsistence of participants during the activity
Individual support: <i>Long term mobility of pupils</i>	85-140€/month per person	Unit costs	Subsistence of participants during the activity depending on destination
Individual support: <i>Short term activities for learners</i>	1-14 days: 55€/day per participant 15-60 days: 40€/day per participant	Unit costs	Subsistence of participants during the activity
Linguistic support	Activities 2-12 months: 150 EUR per participant	Unit costs	Must be motivated i. Appl.

# Application procedure

- Min. 2 Partners from 2 programme-countries (School, Youth)
- Min. 3 Partner from 3 progr. countries (Adult Edu., VET)
- Only **one application per consortium** at the Coordinators N.A.
- Using uniform **eform** for all countries
- First deadline: 30. April 2014 (12h) for all sectors
- Second deadline only for Youth: 1. October 2014 (12h)
- Project start: 1.9.2014 (or 28.2.2015)
- **Award criteria:** Minimum Score 60 of 100 Points and 50% in each Part of Application

# Other actions under Action 2:

## *I. Knowledge Alliances:*

... are transnational, structured and result-driven projects between **higher education and business**.

## *II. Sector Skill Alliances:*

...tackling **skills gaps**, enhancing the responsiveness of **VET systems** to sector-specific labour market needs and demand for new skills

## *III. Capacity Building in the field of youth*

... are **transnational cooperation projects** based on **multilateral** partnerships between organisations active in the field of youth in Programme and **Partner Countries**

- Application in Brussels (EACEA) at April 3<sup>rd</sup> 2014
- Consortium of 6 Organisations in min. 3 countries
- max. 700.000€ (2-year) to 1.000.000€ (3-year)
- More Infos in the Erasmus+ guide

# Key Action 3: Policy reform

Activities for policy reform to achieve the goals of:

- Europe 2020 Strategy
- Strategic framework for European cooperation in education and training (ET2020)
- European Youth Strategy

Supported Actions: **Meetings** between **young people** and **decision-makers** in the field of youth

- Meetings, conferences, consultations and events promoting the active participation of young people in democratic life in Europe

# Key Action 3: Policy reform

- Min. 30 young people (13-30) involved
- Decision-makers regardless their age
  - International: 2 partner - 2 countries
  - National: 1 partner
- Max. 50.000€ per project
- Same refunding than youth exchanges
- Deadlines: 30. April, 1. October
- Application at N.A.